

ibench
bench desking system ●

Imperial
Office furniture

contents



10-11



4-5



12-13



18-19



6-7



14-15



20-21



8-9



16-17



22-23

- 4-5 Clean innovative leg design
- 6-7 Refreshing creative storage
- 8-9 Contemporary modern colours
- 10-11 Cost effective solutions
- 12-13 Individual workstations
- 14-15 Executive mobile storage
- 16-17 Space efficient solutions
- 18-19 Total functionality
- 20-21 Flexibility without compromise
- 22 Desktop and underframe options
- 23 Storage

ibench offers a full compliment of desking, pedestal and storage solutions. Available as a fixed or sliding top system, ibench can be adapted to cluster footprints or individual workstations.

A cable management facility can be incorporated to intermediate leg frames with the use of cable risers. Unsightly cabling can be carried underneath desk tops by single or double flip-down cable trays.

Storage solutions within the ibench range have been designed to offer functionality and flexibility with uniquely developed double combination units from pedestals with integrated cupboards to side filer units with lockable tambour doors.

ibench will assist in providing a professional, sophisticated and corporate company image incorporating contemporary design elements with modern materials and finishes.

white

ibench
bench desking system

Introducing ibench, the latest design from Imperial Office Furniture. Designed with leg sharing flexibility and a clean, innovative leg design, ibench is the ideal product for the modern day office.



Cable management riser option



clean innovative leg design

Refreshing and creative storage designs enable the user to create configurations maximising workspace. Polaris XT screens enhance working practices with the addition of screen filing accessories.



Tall storage with open top section



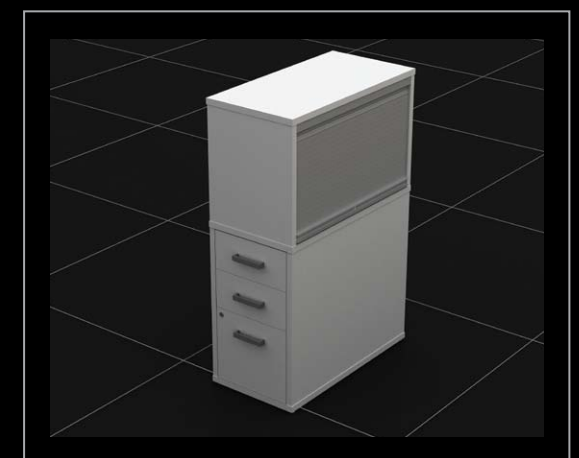
refreshing creative storage

white

Contemporary, modern colours such as white desktops and orange acrylic screens introduce flair into the workplace.

Uniquely designed storage solutions provide additional space with the use of pedestal tambour combination units.

Pedestal with lockable tambour top unit



contemporary modern colours

Combination radial bench desking incorporating integrated desk-high pedestals when configured in a four-desk cluster provides an affordable and cost effective solution due to the leg sharing components. Stylish cable management is designed to carry unsightly cabling with the use of single and double cable trays and vertical cable risers.



Radial cluster with return hoop leg

cost effective solutions

white

ibench can be adapted for use as individual workstation solutions as well as bench footprints.

Return storage units can be used to maximise working area providing the user with complete functionality.



Frame mounted CPU holder



individual workstations

Two-tone credenza storage units are compatible with ibench desk clusters or as a stand alone unit. Optional steel or mfc modesty panels can be integrated with single workstations ranging from 1200mm to 1800mm.

MFC Modesty panel option



santiago cherry



executive mobile storage

white

ibench
bench desking system

ibench is designed to offer total functionality in today's modern office environment.

Sliding desktops provide an efficient cable management solution with the use of easily accessible cable trays located centrally between workstations.



Side filer drawer with lockable tambour top section



space efficient solutions

The ibench range is designed to be compatible with the most stylish and innovative storage range manufactured by Imperial.

Double sided storage solutions and pedestals offer maximum flexibility without compromising office workspace.

Screen mounted monitor arm



total functionality

Desking clusters can be arranged in single or double runs.

Configurations using four desks accompanied by polaris xt screens and single drawer pedestals complete the ideal bench footprint.



Mobile pedestal with open section



flexibility without compromise

cluster showing fixed and sliding tops



Ibench is available with four desktop footprints:-
Rectangular
Single Wave
Double Wave
Radial

Variations of desktops can be used on any leg frame configuration.

This example shows a 6-user cluster consisting of four fixed single wave desktops and two sliding double wave desktops.

cluster showing underframe and desktops in sliding position



Fixed and sliding desktops can be incorporated into the same desking cluster as well as various desktop shapes.

This example shows sliding desktops in their open position to reveal an optional double cable tray.

For ease of construction the ibench framework has been designed with cross rails that are located and assembled from above. Universal cable trays and screen brackets can be fitted as an optional extra.

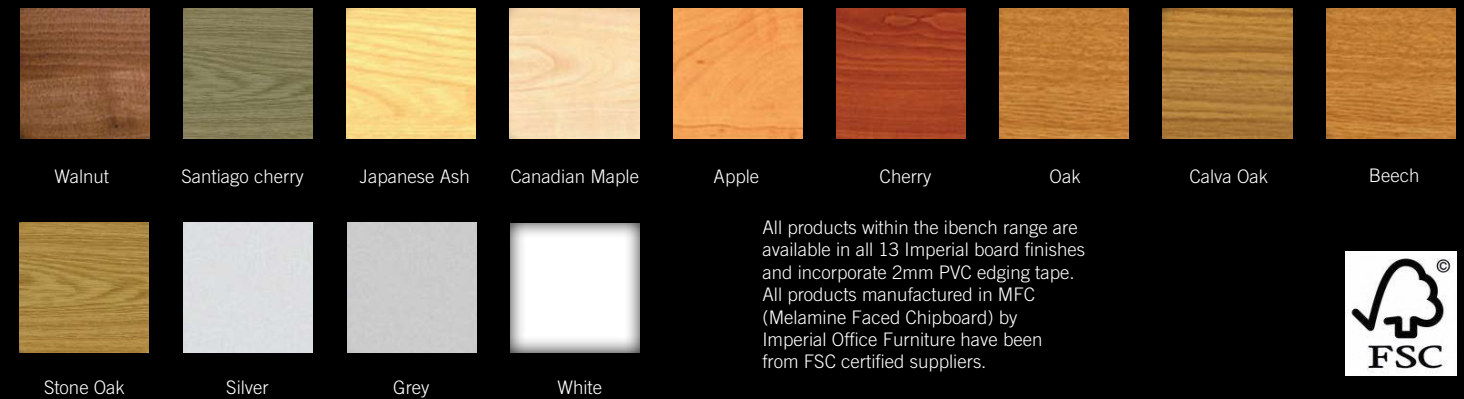
Vertical cable management can be incorporated with the use of mass cable risers that are located on intermediate leg frames.



Unique and stylish storage solutions have been designed to compliment the ibench range. Roll under and roll up units on heavy duty castors allow total flexibility for the user. ibench storage is one of the most practical ranges available for the modern day office. The inclusion of combination units from pedestals with

integrated cupboards' to side filers with a lockable side tambour door, offer a refreshing new look to office storage. All storage units are manufactured with 25mm tops, sides and base and complete with an 18mm solid back and are available with a choice of white or stainless steel handles.

available wood finishes



All products within the ibench range are available in all 13 Imperial board finishes and incorporate 2mm PVC edging tape. All products manufactured in MFC (Melamine Faced Chipboard) by Imperial Office Furniture have been from FSC certified suppliers.



Imperial

Office furniture

Imperial Office Furniture Ltd,
Bankfield Business Park,
Quebec Street,
Bolton BL3 5JN

Tel: 01204 364602
Fax: 01204 381509

www.imperialfurniture.co.uk
info@imperialfurniture.co.uk



British Contract Furnishing Association



Bolton Business Environment Network

5 Year Guarantee

Imperial Office Furniture is committed to providing exceptional service, manufacturing quality products with a comprehensive 5 year guarantee