

CUBICLE SYSTEMS LTD®

Uniclass L226:D94		
CI/SfB		
94	(22.3)	X

Modular

New Generation
Washrooms



- Carefully Designed
- Professionally Engineered
- Perfectly Finished
- Prestigious Image



ISO 9001:2000

Modular One

New Generation Washrooms



Mahogany Panels and Grey Mist Cubicle Pilasters



Granite Vanity Top



Corian Vanity Top

Modular exclusive washrooms are available with IPS

TOTALLY ENCLOSED FLOOR TO CEILING CUBICLES FOR EXCLUSIVE & PRESTIGIOUS LOCATIONS



Cubicle Systems, a leading designer and manufacturer of washrooms, has once again broken the chains of tradition to produce the all new MODULAR Range. New thinking, new ideas and sound engineering has produced the very best quality washrooms.

Floor to ceiling, matching or contrasting wood finish wall panelling and totally enclosed cubicles designed for exclusive and prestigious locations. Properly styled and engineered with no compromise.

MODULAR ONE design flexibility allows for any installation configuration and size requirement.

Available in Mahogany, Cherry, Beech, Maple and Oak wood finish. Cubicles and wall panelling can be supplied to match or contrast with Graphite or Grey Mist spacer panels between matching wood panelling.

MODULAR ONE is also available as bespoke with laminated finish from our standard colour range or as specified. Each MODULAR installation is individually designed to suit our customers specific requirements.

Stainless steel hardware is supplied throughout the MODULAR Range.



Stainless Hardware

MODULAR ONE washrooms are available as wall access duct panelling, cubicles, vanity units, light pelmets and fitments, or to include IPS (Integrated Plumbing System), preplumbed modules incorporating WC, urinal, and wash hand basins.



Glass Cantilever Single stainless steel basin, and vanity top



Mahogany



Beech



Cherry



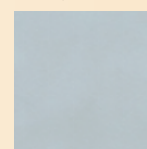
Oak



Maple



Graphite



Grey Mist

(Integrated Plumbing System), preplumbed modules.

Modular Two

New Generation Washrooms



Cherry Panels and Graphite Pilasters



Mahogany



Beech



Cherry



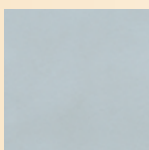
Oak



Maple



Graphite



Grey Mist



Cherry Panels and Grey Mist Pilasters

Modular exclusive washrooms are available with IPS

CAREFULLY DESIGNED, PROPERLY ENGINEERED & PERFECTLY FINISHED.



Stainless Hardware



Stainless Steel Base

MODULAR TWO available in wood finish, Mahogany, Oak, Beech, Cherry and Maple, with matching spacer panels or, as illustrated, Graphite or Grey Mist. MODULAR TWO is available laminated with colours and finishes from our Standard Range. Pilasters are extruded Aluminium Epoxy Powder Coat finish, in Graphite, Grey Mist, or colour specified.

MODULAR TWO incorporates extended height doors, and pilasters with a stainless steel base. Stainless steel hardware and concealed channel fixings contribute to an exclusive robust design.

MODULAR TWO washrooms are available with IPS (Integrated Plumbing System) preplumbed modules, including sanitaryware.



(Integrated Plumbing System), preplumbed modules.

Modular Three

New Generation Washrooms

Wood finishes and laminates are available throughout the Modular Range.



Oak and Graphite

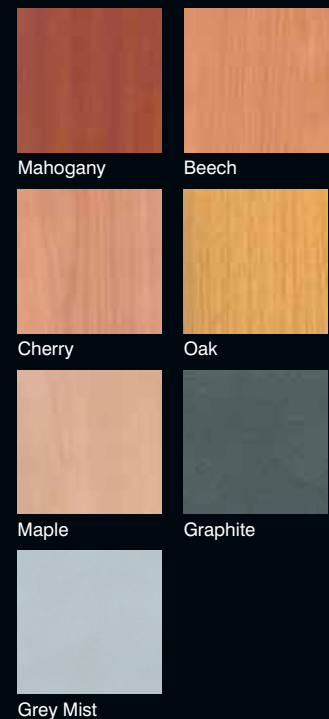


◀ MODULAR THREE WC Cubicles including IPS (Integrated Plumbing System)

MODULAR THREE Traditional configuration cubicles with MODULAR Style and quality to standard height. Stainless steel pedestal mounted pilasters, panels raised from the floor. *Designed Perfection.*

MODULAR THREE available in wood finish, Mahogany, Oak, Beech, Cherry and Maple, and laminate from our standard colour range or as specified. Aluminium pilasters are available in Graphite or Grey Mist, or can be epoxy powder coat painted to meet specific colour requirements.

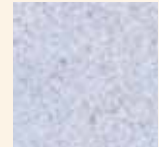
MODULAR THREE is available with IPS (Integrated Plumbing System) preplumbed wall duct access panel system.



QUALITY & STYLE WITH DESIGN PERFECTION



CO31 Panels with Opal Green RAL 6062 Pilasters



NO22



NO49



CO32



NO23



NO22 Panels with Gentain Blue RAL 5010 Pilasters

MODULAR THREE High Quality Washrooms have been specifically designed for cubicle size and colour flexibility. Trimming the door to the width required and trimming the partition to the depth required can determine cubicle size. All cut edges are concealed in full-length channels. MODULAR THREE is available in Natural Wood finish or colours selected from our bright range of laminates. Pilasters are epoxy powder coated painted as illustrated. Specified colours available to special orders.



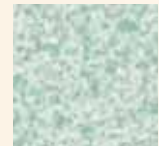
NO28



FO49

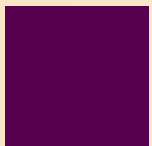


FO48



CO31

PILASTERS COLOUR OPTIONS



Claret Violet
RAL 4004



Mahogany
Brown RAL 8016



Gentain Blue
RAL 5010



Opal Green
RAL 6062



FO50



FO51

(Integrated Plumbing System), preplumbed modules.

Specifications

MODULAR RANGE of washrooms are manufactured using V313 moisture resistant core material bonded with high abrasion resistant wood grained melamine or laminated finished.

All cubicle doors and partitions are 25mm thickness as standard, exposed door edges finished with high impact 2mm PVC matching edging. Partition edges finished with 1mm PVC matching edging.

MODULAR RANGE is available in three styles but the material specifications and colour options remain as indicated within this brochure.

MODULAR RANGE is available in 5 wood textures and laminated finishes from our preferred colour selection. Specified laminates or finish are available but may be subject to extended delivery time.

FULL HEIGHT WALL DUCT PANELLING System included IPS (Integrated Plumbing System) is available if required. Low level cistern housing and vanity unit panels are all supplied with long edges finished with Graphite or Grey Mist 2mm PVC square finish for effect. Matching edges available for laminate finish.

MODULAR RANGE specially designed heavy duty aluminium pilasters are available in Graphite, Grey Mist, or colours specified.

BESPOKE COLOUR design service available to architects, designers and contractors for specific contracts, corporate colour schemes or special requirements.

MODULAR DESIGN includes cubicles, full height wall duct panelling, with IPS, vanity units, light pelmets, vision screens etc. When ordering the MODULAR RANGE all components are included to complete the installations, "NO EXTRAS". Modular Range is available in the standard colours specified throughout this brochure. Aluminium pilasters are available as standard Graphite or Grey Mist. Other colours are available for larger contracts but small contracts requiring special colours may be subject to an extra charge.

To order email or fax us a floor plan or send us the drawings with the relevant information and we will do the rest. For help when ordering, general assistance or colour samples phone: 01425 615585



Product Guarantee

MODULAR RANGE of washrooms is covered by Cubicle Systems Ltd 5 year product guarantee.

IPS

Pre-plumbed Wall Duct Access Panel System



Cubicle Systems IPS (Integrated Plumbing System) is a fully adjustable steel frame fitted with decorative removable panels and available with a standard range of factory installed sanitaryware, pre-plumbed and tested, and is supplied as a complete module that requires only to be installed and connected to site water supply and services.



IPS can be produced and supplied to meet virtually any size requirement. Available as full or half height, the steel frame is adjustable, within its design limitations, to achieve a plumb level and inline installation.

CUBICLE SYSTEMS LTD®

TOILET CUBICLES & WASHROOM FACILITIES

Nova Business Units, Gore Road Industrial Estate, New Milton, Hampshire BH25 6RP

Telephone: 01425 615585 Fax: 01425 628144 email: sales@cubiclesystems.co.uk www.cubiclesystems.co.uk